

Miniatuursteekkoppelingen voor pneumatische toepassingen

Productserie LM van Ø 3 en 4 mm

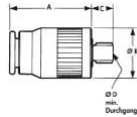
Technische specificaties op pagina 19

- Speciaal ontwikkeld voor miniatuur-pneumatische toepassingen
- Kleine en robuuste uitvoering
- Schroefdraadelementen kunnen met de hand worden ingeschroefd
- Geschikt voor kunststof- en metalen buizen
- Ook met Super Thread-uitvoering



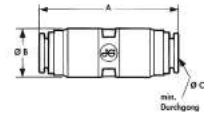
Puntstuk mini

Schroefdraad metrisch



| Art.nr. | Buis bui. dia. | Schroefdraad | A | Ø B | C | Ø D |
|----------|----------------|--------------|------|-------------|-----|-----|
| LM0103M3 | 3 x | M3 | | op aanvraag | | |
| LM0104M3 | 4 x | M3 | 13,5 | 8,0 | 3,3 | 1,0 |
| LM0104M5 | 4 x | M5 | 13,5 | 8,0 | 3,5 | 2,0 |

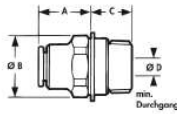
Sok mini



| Art.nr. | Buis bui. dia. | A | Ø B | Ø C |
|---------|----------------|------|------|-----|
| LM0403E | 3 | 22,9 | 8,45 | 2,2 |
| LM0404E | 4 | 23,7 | 9,0 | 3,4 |

Puntstuk mini

Schroefdraad „Super Thread“

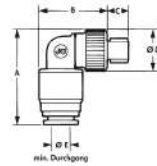


Super Thread*

| Art.nr. | Buis bui. dia. | Schroefdraad BSP | A | Ø B | C | Ø D |
|----------|----------------|------------------|-----|------|-----|-----|
| LM010411 | 4 x | 1/8" | 8,6 | 10,0 | 7,1 | 3,0 |

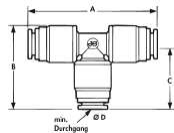
* Meer info over „Super Thread“-schroefdraden vindt u op pagina 12.

Kniepuntstuk mini



| Art.nr. | Buis bui. dia. | Schroefdraad | A | Ø B | C | Ø D | Ø E |
|----------|----------------|--------------|-------------|------|-----|-----|-----|
| LM0903M3 | 3 x | M3 | op aanvraag | | | | |
| LM0904M3 | 4 x | M3 | 18,4 | 14,3 | 3,3 | 7,7 | 1,0 |
| LM0904M5 | 4 x | M5 | 18,9 | 14,3 | 3,5 | 8,8 | 2,0 |

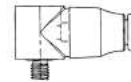
T-stuk mini



| Art.nr. | Buis bui. dia. | A | B | C | Ø D |
|---------|----------------|------|------|------|-----|
| LM0203E | 3 | 28,2 | 18,3 | 14,1 | 2,2 |
| LM0204E | 4 | 31,4 | 20,2 | 15,7 | 3,4 |

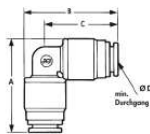
Banjo met holle schroef mini

Schroefdraad metrisch



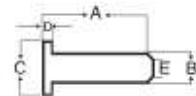
| Art.nr. | Buis bui. dia. | Schroefdraad |
|-----------|----------------|--------------|
| LM1503M3E | 3 x | M3 |

Knie mini



| Art.nr. | Buis bui. dia. | A | B | C | Ø D |
|---------|----------------|------|------|------|-----|
| LM0303E | 3 | 18,3 | 18,3 | 14,1 | 2,2 |
| LM0304E | 4 | 20,2 | 20,2 | 15,7 | 3,4 |

Steunhuls mini



| Art.nr. | Buis bui. dia. | A | B | C | D | E |
|---------|----------------|-----|-----|-----|-----|-----|
| LMTS04 | 4 | 9,0 | 2,6 | 3,9 | 0,4 | 1,8 |

Steunhulzen voor zachte buizen of polyurethaanbuizen van 10 bar tot max. 16 bar.